

HARDWARE

ISO Large Flanges

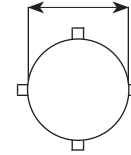
- Flanges and Bolts are 304 Stainless Steel
- Claw-Clamps are Aluminum

HARDWARE

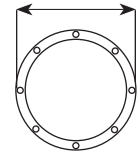
DIMENSIONS

NW63	Tube OD: 2.50", Clamp Flange OD: 95mm/3.74", Bolted Flange OD: 130mm/5.12"
NW100	Tube OD: 4.00", Clamp Flange OD: 130mm/5.12", Bolted Flange OD: 165mm/6.50"
NW160	Tube OD: 6.00", Clamp Flange OD: 180mm/7.09", Bolted Flange OD: 225mm/8.86"
NW200	Tube OD: 8.00", Clamp Flange OD: 240mm/9.45", Bolted Flange OD: 285mm/11.22"

Clamp Flange OD



Bolted Flange OD

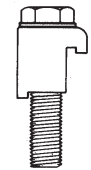


ISO LARGE FLANGES

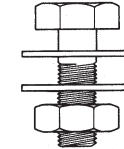
DUNIWAY PART #	DESCRIPTION	PRICE	SKETCH #
LF63-DCC	NW63 LF Double Claw Clamp	\$6.00	1
LF100-DCC	NW100 LF Double Claw Clamp	6.00	1
LF160-DCC	NW160 LF Double Claw Clamp	6.00	1
LF200-DCC	NW200 LF Double Claw Clamp	6.00	1
LF63-SCC	NW63 LF Single Claw Clamp	5.00	2
LF100-SCC	NW100 LF Single Claw Clamp	5.00	2
LF160-SCC	NW160 LF Single Claw Clamp	6.00	2
LF200-SCC	NW200 LF Single Claw Clamp	6.00	2
LF63-BDF	NW63 Double Flange Bolts, Set of 4	6.50	3
LF100-BDF	NW100 Double Flange Bolts, Set of 8	13.00	3
LF160-BDF	NW160 Double Flange Bolts, Set of 8	22.00	3
LF200-BDF	NW200 Double Flange Bolts, Set of 12	28.00	3
LF63-BTF	NW63 Tapped Flange Bolts, Set of 4	3.50	4
LF100-BTF	NW100 Tapped Flange Bolts, Set of 8	7.00	4
LF160-BTF	NW160 Tapped Flange Bolts, Set of 8	13.50	4
LF200-BTF	NW200 Tapped Flange Bolts, Set of 12	20.00	4
LF63-CR	NW63 CenterRing Ring Ass'y, SST, Includes VITON® O-Ring	45.00	5
LF100-CR	NW100 CenterRing Ring Ass'y, SST, Includes VITON® O-Ring	60.00	5
LF160-CR	NW160 CenterRing Ring Ass'y, SST, Includes VITON® O-Ring	74.00	5
LF200-CR	NW200 CenterRing Ring Ass'y, SST, Includes VITON® O-Ring	105.00	5
LF63-CRA	NW63 CenterRing Ring Ass'y, Aluminum, Includes VITON® O-Ring	29.00	6
LF100-CRA	NW100 CenterRing Ring Ass'y, Aluminum, Includes VITON® O-Ring	35.00	6
LF160-CRA	NW160 CenterRing Ring Ass'y, Aluminum, Includes VITON® O-Ring	45.00	6
LF200-CRA	NW200 CenterRing Ring Ass'y, Aluminum, Includes VITON® O-Ring	60.00	6
LF63-OV	NW63 O-Ring Replacement, VITON®	8.00	NA
LF100-OV	NW100 O-Ring Replacement, VITON®	11.00	NA
LF160-OV	NW160 O-Ring Replacement, VITON®	19.00	NA
LF200-OV	NW200 O-Ring Replacement, VITON®	24.00	NA
LF63-BRR	NW63 Rotatable Ring, Bolt, With Retainer Wire	145.00	8
LF100-BRR	NW100 Rotatable Ring, Bolt, With Retainer Wire	185.00	8
LF160-BRR	NW160 Rotatable Ring, Bolt, With Retainer Wire	365.00	8
LF200-BRR	NW200 Rotatable Ring, Bolt, With Retainer Wire	415.00	8
LF63-250	NW63 Short Weld Flange	50.00	9
LF100-400	NW100 Short Weld Flange	70.00	9
LF160-600	NW160 Short Weld Flange	105.00	9
LF200-800	NW200 Short Weld Flange	165.00	9



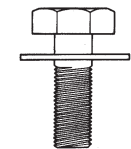
1



2



3

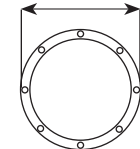


4



5, 6

Bolted Flange OD



8



9

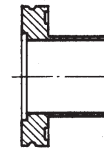
HARDWARE

ISO Large Flanges

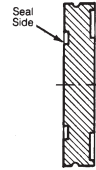
HARDWARE

ISO LARGE FLANGES

DUNIWAY PART #	DESCRIPTION	PRICE	SKETCH #
LF63-HN	NW63 Half-Nipple (Long Butt Flange)	\$110.00	10
LF100-HN	NW100 Half-Nipple (Long Butt Flange)	120.00	10
LF160-HN	NW160 Half-Nipple (Long Butt Flange)	165.00	10
LF200-HN	NW200 Half-Nipple (Long Butt Flange)	230.00	10
LF63-FB	NW63 Blank Flange, SST	50.00	11
LF100-FB	NW100 Blank Flange, SST	75.00	11
LF160-FB	NW160 Blank Flange, SST	100.00	11
LF200-FB	NW200 Blank Flange, SST	176.00	11
LF63-B250	NW63 Weld Flange, Bolted	80.00	12
LF100-B400	NW100 Weld Flange, Bolted	121.00	12
LF160-B600	NW160 Weld Flange, Bolted	225.00	12
LF200-B800	NW200 Weld Flange, Bolted	275.00	12
LF63-NP	NW63 Nipple	182.00	14
LF100-NP	NW 100 Nipple	235.00	14
LF160-NP	NW160 Nipple	360.00	14
LF200-NP	NW200 Nipple	525.00	14
LF63XKF40	NW63 to KF40 Adapter	135.00	15
LF63XKF50	NW63 to KF50 Adapter	145.00	15
LF100XKF25	NW100 to KF25 Adapter	185.00	15
LF100XKF40	NW100 to KF40 Adapter	190.00	15
LF100XKF50	NW100 to KF50 Adapter	195.00	15
LF160XKF40	NW160 to KF40 Adapter	210.00	15
LF160XKF50	NW160 to KF50 Adapter	225.00	15
LF63XLF100	NW63 to NW100 Adapter	220.00	16
LF63XLF160	NW63 to NW160 Adapter	287.00	16
LF100XLF160	NW100 to NW160 Adapter	330.00	16
LF200XLF100	NW200 to NW100 Adapter	380.00	16
LF200XLF160	NW200 to NW160 Adapter	400.00	16
LF63X450	NW63 to 4.50" OD CFF Adapter	203.00	17
LF100X600	NW100 to 6.00" OD CFF Adapter	276.00	17
LF160X800	NW160 to 8.00" OD CFF Adapter	420.00	17
LF200X1000	NW200 to 10.00" OD CFF Adapter	655.00	17
LF63-ASA200	NW63 to ASA200 Flange, w/o Groove	490.00	18
LF100-ASA200	NW100 to ASA200 Flange, w/o Groove	465.00	18
LF160-ASA400	NW160 to ASA400 Flange, w/o Groove	500.00	18
LF200-ASA600	NW200 to ASA600 Flange, w/o Groove	930.00	18
LF63-SSTB	SST Bellows (Thin Wall), NW63 Flanges, L= 6"	267.00	19
LF100-SSTB	SST Bellows (Thin Wall), NW100 Flanges, L= 7"	368.00	19
LF160-SSTB	SST Bellows (Thin Wall), NW160 Flanges, L= 8"	546.00	19
LF200-SSTB	SST Bellows (Thin Wall), NW200 Flanges, L= 8"	990.00	19
LF63-FX10	Flexible Metal Hose, NW63 Flanges, L= 10"	265.00	20
LF63-FX20	Flexible Metal Hose, NW63 Flanges, L= 20"	350.00	20
LF100-FX10	Flexible Metal Hose, NW100 Flanges, L= 10"	355.00	20
LF100-FX20	Flexible Metal Hose, NW100 Flanges, L= 20"	420.00	20



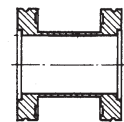
10



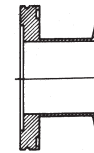
11



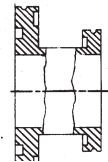
12



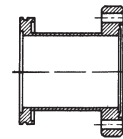
14



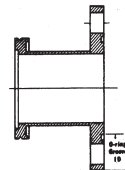
15



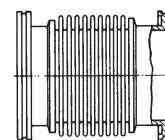
16



17



18



19, 20

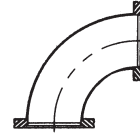
HARDWARE

ISO Large Flanges

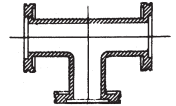
HARDWARE

ISO LARGE FLANGES

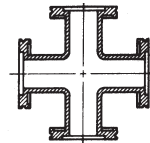
DUNIWAY PART #	DESCRIPTION	PRICE	SKETCH #
LF63-EL90	Elbow, 90 Degree, NW63 Flanges	\$205.00	21
LF100-EL90	Elbow, 90 Degree, NW100 Flanges	260.00	21
LF160-EL90	Elbow, 90 Degree, NW160 Flanges	590.00	21
LF200-EL90	Elbow, 90 Degree, NW200 Flanges	605.00	21
LF63-TE	Tee - NW63 Flanges	286.00	22
LF100-TE	Tee - NW100 Flanges	370.00	22
LF160-TE	Tee - NW160 Flanges	615.00	22
LF200-TE	Tee - NW200 Flanges	1,050.00	22
LF63-CS	Cross - NW63 Flanges	380.00	23
LF100-CS	Cross - NW100 Flanges	650.00	23
LF160-CS	Cross - NW160 Flanges	Inquire	23
LF200-CS	Cross - NW200 Flanges	Inquire	23



21



22



23