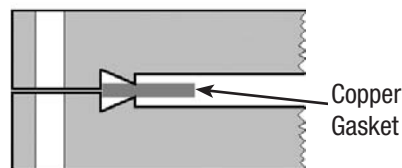


# HARDWARE

## Conflat® - Style Flanges

Duniway Stockroom Corp. supplies a wide range of Conflat-style hardware, including: fixed flanges, rotatable flanges, fittings, gaskets and fasteners. Conflat flanges are the industry standard for high and ultrahigh vacuum applications. The unique design captures a **FLAT** copper gasket between two symmetrical, outward sloping, **CON**ical stainless steel knife-edges on identical mating flanges. (Thus the name Conflat) As the knife edges are pushed together during tightening of the flange, the copper gasket is constrained from outward flow by the inner diameter of the flange face. (see sketch) This design gives reliable, all-metal, leak-free seals over a wide range of temperatures (cryogenic to 450°C).

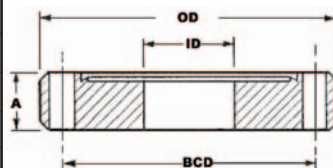


HARDWARE

**SEE PAGE 12 FOR COPPER & SILVER-PLATED COPPER GASKETS**

### DIMENSIONS

ISO	PART # PREFIX	OD	BCD	THICKNESS A	# OF BOLTS
NW16	<b>133-</b>	1.33"	1.062"	.300"	6
NW25	<b>218-</b>	2.125"	1.625"	.470"	4
NW35	<b>275-</b>	2.75"	2.312"	.500"	6
NW50	<b>338-</b>	3.375"	2.850"	.625"	8
NW63	<b>450-</b>	4.50"	3.628"	.680"	8
NW75	<b>458-</b>	4.625"	4.030"	.750"	10
NW100	<b>600-</b>	6.00"	5.128"	.780"	16
NW130	<b>675-</b>	6.75"	5.969"	.840"	18
NW150	<b>800-</b>	8.00"	7.128"	.880"	20
NW200	<b>1000-</b>	10.00"	9.128"	.970"	24
NW250	<b>1200-</b>	12.00"	11.100"	1.02"	32
NW275	<b>1325-</b>	13.25"	12.060"	1.12"	30



**NOTE: FOR SIZES NOT SHOWN, PLEASE REQUEST A QUOTE.**

### CONFLAT-TYPE FLANGES

OUTER DIAMETER	AVAILABLE INNER DIAMETERS																R ROTATABLE	N NON-ROTATABLE	RT ROTATABLE TAPPED	NT NON-ROTATE TAPPED	
	BLANK	0.25"	.375"	0.50"	0.75"	1.00"	1.25"	1.50"	1.625"	2.00"	2.50"	3.00"	4.00"	5.00"	6.00"	8.00"					10.00"
<b>F133-</b>	<b>000</b>	<b>025</b>	<b>038</b>	<b>050</b>	<b>075</b>	--	--	--	--	--	--	--	--	--	--	--	--	\$16.00	\$14.00	\$19.50	\$17.25
<b>F218-</b>	<b>000</b>	<b>025</b>	--	<b>050</b>	<b>075</b>	<b>100</b>	--	--	--	--	--	--	--	--	--	--	--	19.00	16.00	23.00	21.00
<b>F275-</b>	<b>000</b>	<b>025</b>	--	<b>050</b>	<b>075</b>	<b>100</b>	<b>125</b>	<b>150</b>	<b>162</b>	--	--	--	--	--	--	--	--	24.00	16.00	30.00	24.00
<b>F338-</b>	<b>000</b>	--	--	--	--	--	--	<b>150</b>	--	<b>200</b>	--	--	--	--	--	--	--	45.00	40.00	54.00	49.00
<b>F450-</b>	<b>000</b>	--	--	--	--	--	--	<b>150</b>	--	<b>200</b>	<b>250</b>	--	--	--	--	--	--	67.00	58.00	77.00	67.00
<b>F458-</b>	<b>000</b>	--	--	--	--	--	--	--	--	--	<b>250</b>	<b>300</b>	--	--	--	--	--	74.00	64.00	85.00	76.00
<b>F600-</b>	<b>000</b>	--	--	--	--	--	--	--	--	--	--	--	<b>400</b>	--	--	--	--	109.00	87.00	125.00	115.00
<b>F675-</b>	<b>000</b>	--	--	--	--	--	--	--	--	--	--	--	<b>400</b>	<b>500</b>	--	--	--	120.00	105.00	133.00	126.00
<b>F800-</b>	<b>000</b>	--	--	--	--	--	--	--	--	--	--	--	--	--	<b>600</b>	--	--	180.00	158.00	220.00	189.00
<b>F1000-</b>	<b>000</b>	--	--	--	--	--	--	--	--	--	--	--	--	--	--	<b>800</b>	--	303.00	276.00	343.00	317.00
<b>F1200-</b>	<b>000</b>	--	--	--	--	--	--	--	--	--	--	--	--	--	--	<b>1000</b>	Inquire	Inquire	Inquire	Inquire	Inquire
<b>F1325-</b>	<b>000</b>	--	--	--	--	--	--	--	--	--	--	--	--	--	--	<b>1000</b>	Inquire	Inquire	Inquire	Inquire	Inquire

Example: **F450-200R** Flange, 4.5" OD, 2.0" ID, Rotatable Flange, Through Holes..... \$67.00

Example: **F800-000NT** Blank Flange, 8.0" OD, 0.0" ID, Non-Rotatable Flange, Tapped Holes.....\$189.00

Example: **F218-075RT** Flange, 2.125" OD, 0.75" ID, Rotatable Flange, Tapped Holes.....\$23.00