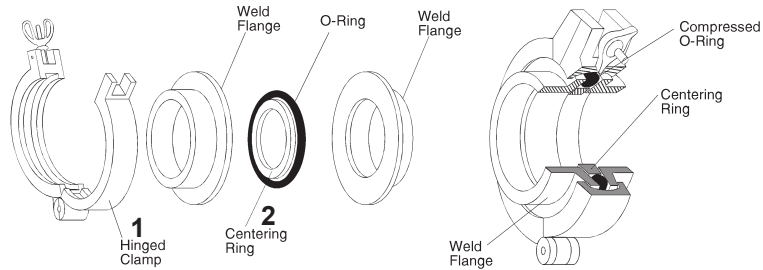


HARDWARE

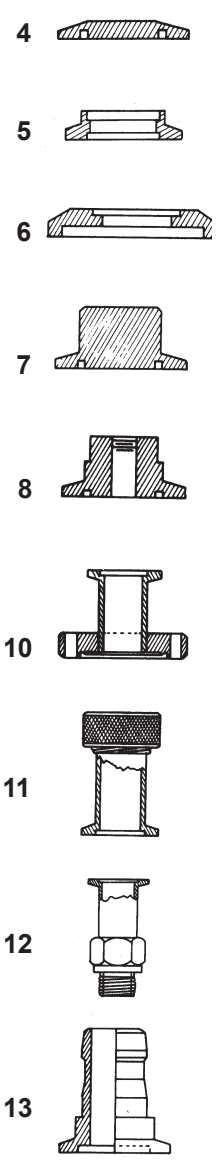
KF fittings, Qwik Flanges

- 304 Stainless Steel
- Some parts also available in Aluminum and Brass (See Note *)
- Dupont® Dow Certified



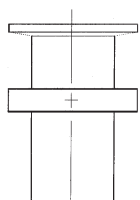
See Page 17 for Valves

HARDWARE

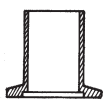


TUBE OD FLANGE OD	KF16 30MM	3/4" 1.18"	KF25 40MM	1" 1.57"	KF40 55MM	1 1/2" 2.16"	KF50 75MM	2" 2.95"
1. CLAMP, Alum.; with wing nut	KF16-CP	\$5.00	KF25-CP	\$7.00	KF40-CP	\$8.00	KF50-CP	\$14.00
2. CENTERING RING* (Includes Viton™ O-ring)	KF16-CR	5.00	KF25-CR	7.00	KF40-CR	9.00	KF50-CR	12.00
3. O-RING, Viton, replacement	KF16-OV	2.00	KF25-OV	2.00	KF40-OV	3.00	KF50-OV	4.00
4. FLANGE, Blank (B)*	KF16-FB	7.00	KF25-FB	8.00	KF40-FB	12.50	KF50-FB	16.00
5. FLANGE, Socket Weld (B)*	KF16-075	8.00	KF25-100	9.00	KF40-150	12.50	KF50-200	18.00
6. FLANGE, Weld Reducer			KF25-075	9.00	KF40-100	12.50	KF50-150	18.00
			KF25-050	9.00	KF40-050	12.50	KF50-075	18.00
7. STUB, Blank (B)*	KF16-S0	11.25	KF25-S0	12.50	KF40-S0	17.50	KF50-S0	26.00
8. STUB, 1/8" NPT	KF16-1/8	24.00	KF25-1/8	27.00	KF40-1/8	31.00	KF50-1/8	40.00
STUB, 1/4" NPT	KF16-1/4	24.00	KF25-1/4	27.00	KF40-1/4	31.00	KF50-1/4	40.00
STUB, 3/4" NPT, MALE			KF25-3/4M	67.00				
ADAPTERS								
10. KF to Conflat® Flange 1/2"	KF16-133	52.00	KF25-275	66.00	KF40-275	66.00	KF50-450	136.00
11. KF to Compression Port 1/2"			KF25-CP50	63.00	KF40-CP50	68.00		
12. KF to Compression Port 3/4"	KF16-CP75	73.00	KF25-CP75	68.00	KF40-CP75	72.00	KF50-CP75	91.00
13. KF to Compression Port 1"			KF25-CP100	85.00	KF40-CP100	90.00	KF50-CP100	95.00
14. KF to Compression Port 1 1/8"			KF25-CP118	96.00	KF40-CP118	120.00	KF50-CP118	155.00
15. KF to Welch Pump Inlet	KF16-1400	70.00	KF25-1402	74.00	KF40-1397	91.00		
16. KF to Hose Nipple (Alum. Only) Adapts to hose ID	KF16-HA	11.00	KF25-HA	13.00	KF40-HA	17.00	KF50-HA	23.00
17. KF to Leak Detector Port			KF25-TP118	55.00	KF40-TP118	65.00		
18. HALF NIPPLE*	KF16-HN	12.50	KF25-HN	15.00	KF40-HN	17.00	KF50-HN	25.00
19. NIPPLE	KF16-NP	37.00	KF25-NP	42.00	KF40-NP	53.00	KF50-NP	65.00
20. NIPPLE, Reducing (Adapter Flange)*			KF25-NR16	34.00	KF40-NR16	38.00	KF50-NR16	40.00
					KF40-NR25	38.00	KF50-NR25	45.00
							KF50-NR40	45.00
21. ELBOW, 45°	KF16-EL45	45.00	KF25-EL45	50.00	KF40-EL45	78.00	KF50-EL45	88.00
22. ELBOW, 90°	KF16-EL90	38.00	KF25-EL90	43.00	KF40-EL90	60.00	KF50-EL90	75.00
23. TEE	KF16-TE	61.00	KF25-TE	70.00	KF40-TE	79.00	KF50-TE	115.00
24. CROSS	KF16-CS	90.00	KF25-CS	105.00	KF40-CS	135.00	KF50-CS	180.00
25. FLEX COUPLING, 4"	KF16-FX4	80.00	KF25-FX4	75.00	KF40-FX4	82.00	KF50-FX4	85.00
26. FLEX COUPLING, 10"	KF16-FX10	85.00	KF25-FX10	89.00	KF40-FX10	115.00	KF50-FX10	152.00
27. FLEX COUPLING, 20"	KF16-FX20	103.00	KF25-FX20	110.00	KF40-FX20	140.00	KF50-FX20	165.00
28. FLEX COUPLING, 40"	KF16-FX40	152.00	KF25-FX40	158.00	KF40-FX40	195.00	KF50-FX40	215.00
29. ADAPTIVE CENTERING RING* (Includes Viton O-ring) (Adapt from KFXX - to KFYY)	KF16-10-CR	10.00	KF25-20-CR	11.00	KF40-32-CR	13.00		

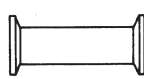
*NOTE: B - Items also available in Brass (Add a "B" to the end of the part #). Delivery 1 Week.
Also Available: KF10 Blank Flange (KF10-FB) \$6. KF10 Centering Ring (KF10-CR) \$5.



14



15



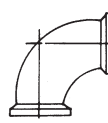
16



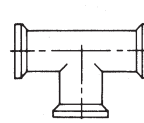
17



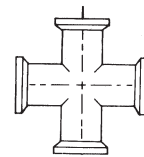
18



19



20



21



22